

The logo for Whiston Court Worcester features a stylized red leaf-like graphic to the left of the text. The text 'Whiston Court' is in a large, dark serif font, and 'Worcester' is in a smaller, dark sans-serif font below it.

Whiston Court

Worcester



Not-for-profit
assisted living,
where people
come first.

Discover a supportive
retirement community
that's perfect for you



Part of the Abbeyfield family.
www.abbeyfieldwandh.co.uk

Welcome home

Enviably located in historic Worcester, Whiston Court is an established and vibrant retirement community; the ideal choice for older people who are ready to downsize and make life just a little easier, amidst good company whilst retaining full autonomy and independence.

Made up of high quality, self-contained apartments - available to purchase or to rent – Whiston Court is designed to offer independent living within a supportive community environment.

For peace of mind, on-site support is available 24 hours a day and services such as eating together every lunchtime and help with cleaning and everyday chores leave you free to enjoy yourself.

Excellent on-site facilities include a residents' lounge for socialising, activity rooms, a landscaped garden, a guest suite for visitors and even a health and beauty suite. Carefully designed, Whiston Court can also accommodate extra care services which residents can arrange as and when required.

A place to call home from a name you can trust

Whiston Court is managed by Abbeyfield Worcester & Hereford Society Ltd, a trusted charity dedicated to championing and supporting the housing needs of older people within the two counties.







Assisted-living - a lifestyle choice

Assisted living is the ideal choice for older people who wish to maintain their independence whilst making life a little easier in their retirement years. Perhaps the family home is now too large, garden maintenance is becoming a chore and everyday tasks are more burdensome than they once were. Maybe it's not so easy to get out and about, maintain hobbies or keep in touch with friends.

Independent living - with a little more help as and when it's needed

The stunning homes at Whiston Court are especially suited to those ready to downsize without compromising on quality of life.

Each well-designed apartment offers every home comfort and privacy, with the reassurance that comes from an environment offering companionship, security and 24-hour support.

Peace of mind, for both residents and their families, comes from a supportive, caring environment. On the social front, we eat a freshly prepared meal as a community once a day and there's always plenty to do and get involved in with our busy events calendar.

We also recognise that the needs of older people change over time, which is why Whiston Court residents can arrange their own extra care services as and when may be required.





About Abbeyfield

Abbeyfield is the trusted name behind the welcoming Whiston Court retirement community.

People not Profits

Abbeyfield Worcester & Hereford Society Ltd has been providing quality housing for older people with a supportive, community ethos for more than 45 years. Our aim is to ensure the wellbeing and happiness of older people and we do all that we can to strike the perfect balance between independent living and companionship for each of our residents.

Part of the Abbeyfield family

We are part of the Abbeyfield Society, an international charitable housing organisation founded by Richard Carr-Gomm in 1956 who dedicated his life to championing the needs of older people.

Today Abbeyfield has more than 500 houses and homes, run by specialist staff who are dedicated to providing exceptional help and support to all residents.

Just like its parent organisation, Abbeyfield Worcester & Hereford Society Ltd puts people before profits and constantly seeks ways to improve its services and quality of life for all residents.



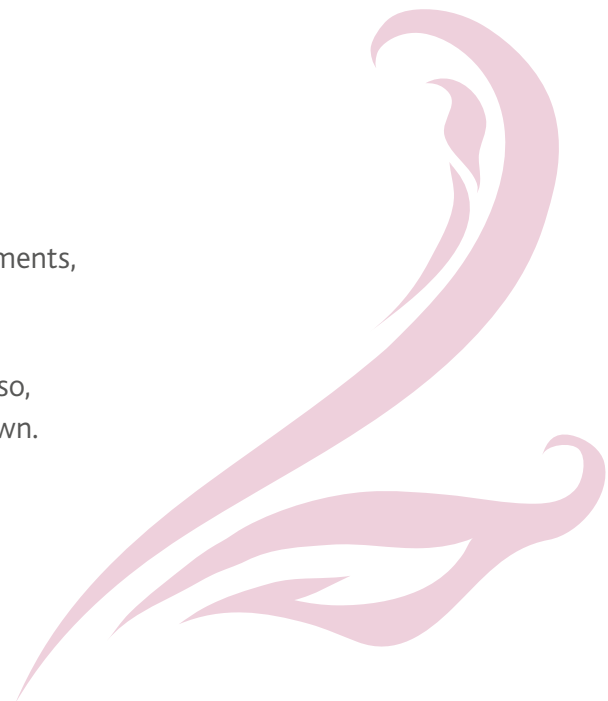


Your new home from home

Whiston Court is made up of 37 beautiful, self-contained one- and two-bedroom apartments, available to purchase or as rental accommodation.

Each bright and modern apartment is generously proportioned and offers flexible living so, whichever apartment you view, you're sure to find a space you can quickly make your own.

Please contact us for details of apartments currently available for sale or to rent.





Each apartment features:

Kitchen

- Fully-fitted kitchen with soft close doors
- Ceramic hob with built-in extractor
- Built-in electric oven
- Integrated slimline dishwasher, fridge freezer and washer dryer
- Stainless steel sink with mixer tap
- Ceramic wall tiles above all worktops and behind cooker
- Slip-resistant Tarkett flooring

Bathroom

- White sanitary ware
- Level access shower tray
- Thermostatic mixer shower control
- Soft-closing toilet seat
- Monobloc mixer taps
- Full-height shower screen

Security and safety

- Warden call and door entry system
- Pull cord in bathroom

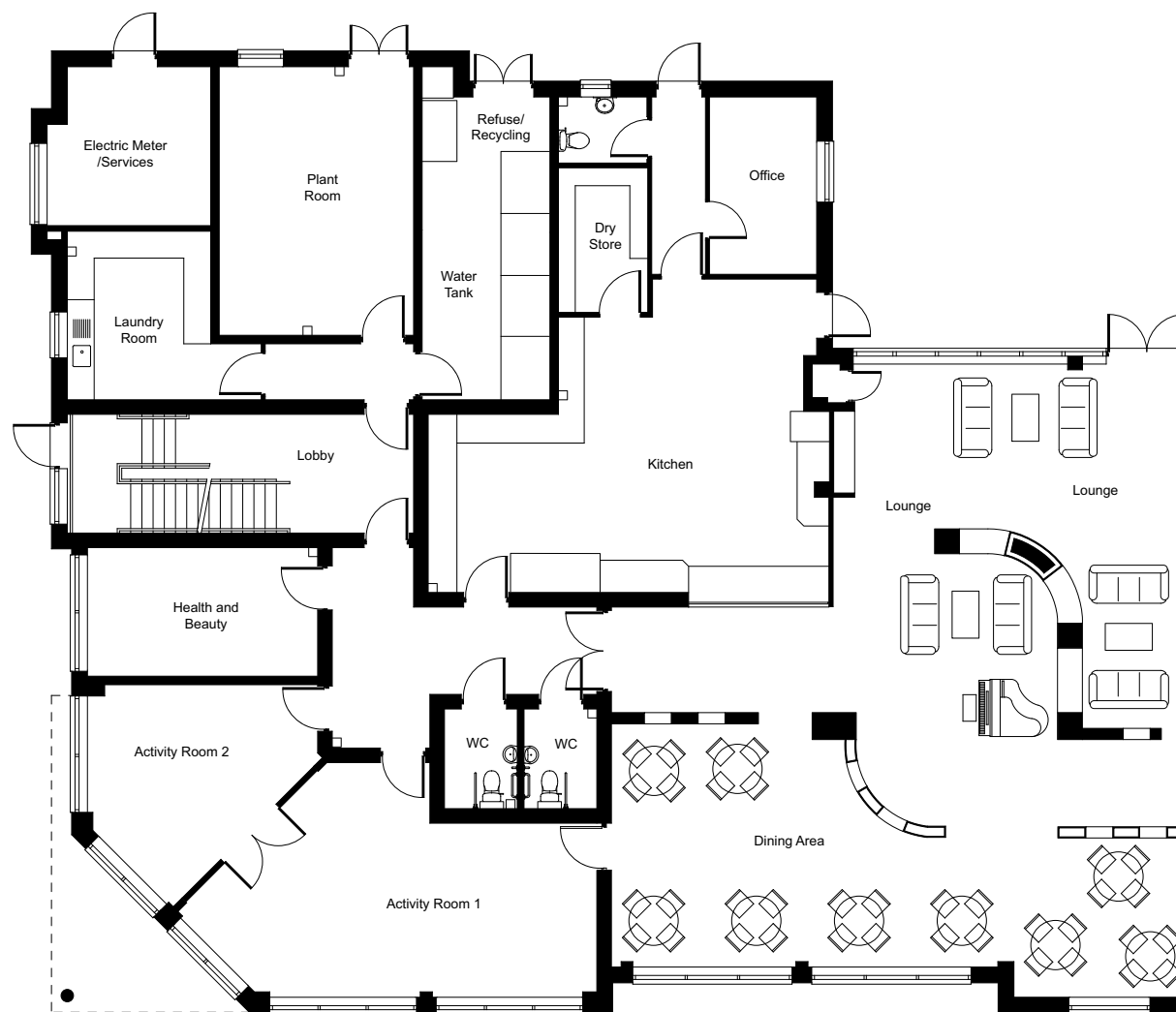
Electrical

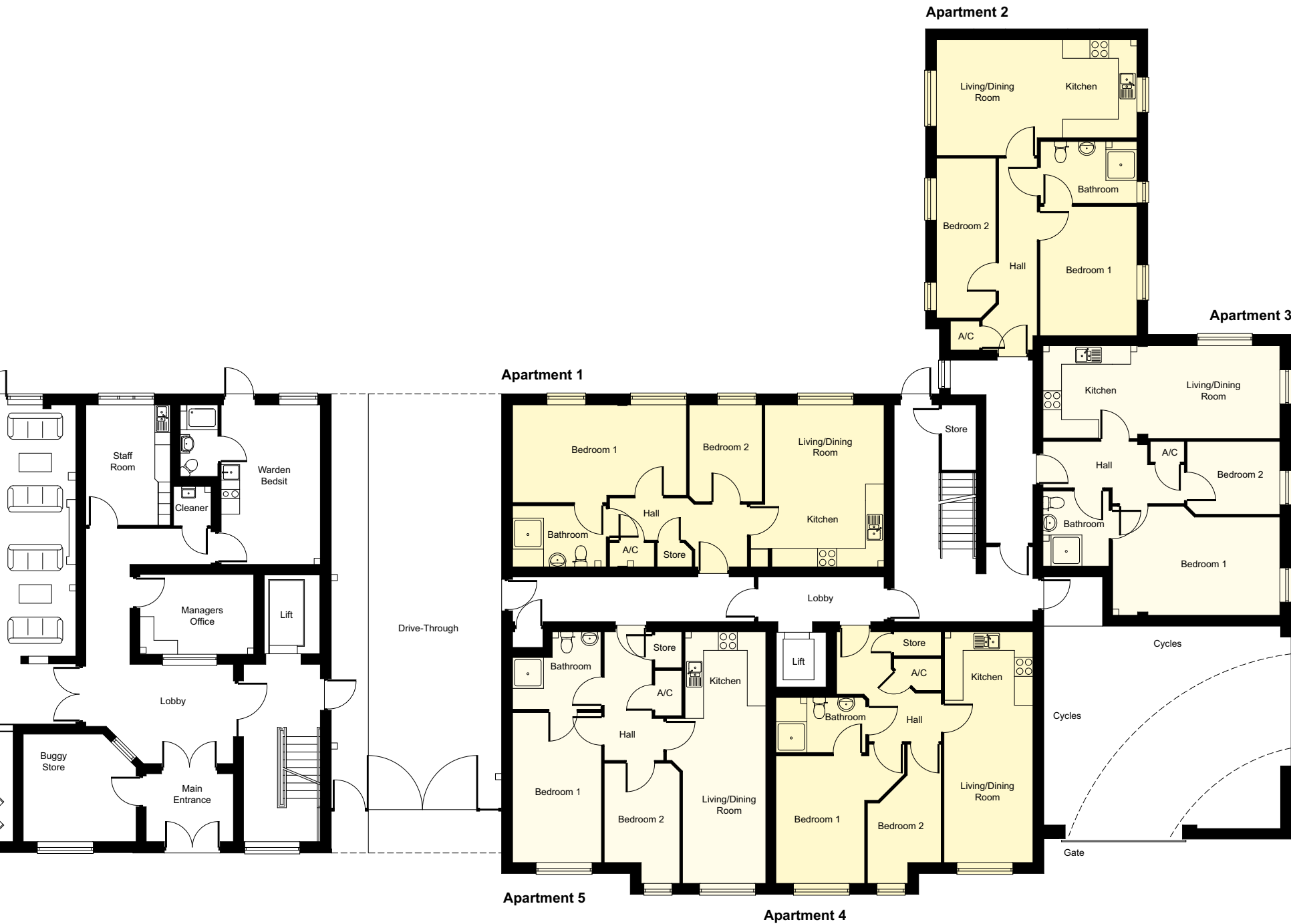
- Downlighters in kitchen and bathroom
- Under-cupboard lights to kitchen wall units
- Shaver point in bathroom
- TV points in living room and main bedroom
- BT points in living room and main bedroom
- Smoke detectors with battery back-up
- Centrally-supplied heating and hot water
- Individual thermostatic heating control
- Underfloor heating in community areas

Ground Floor

Apartments 1 to 5

2 bedroom



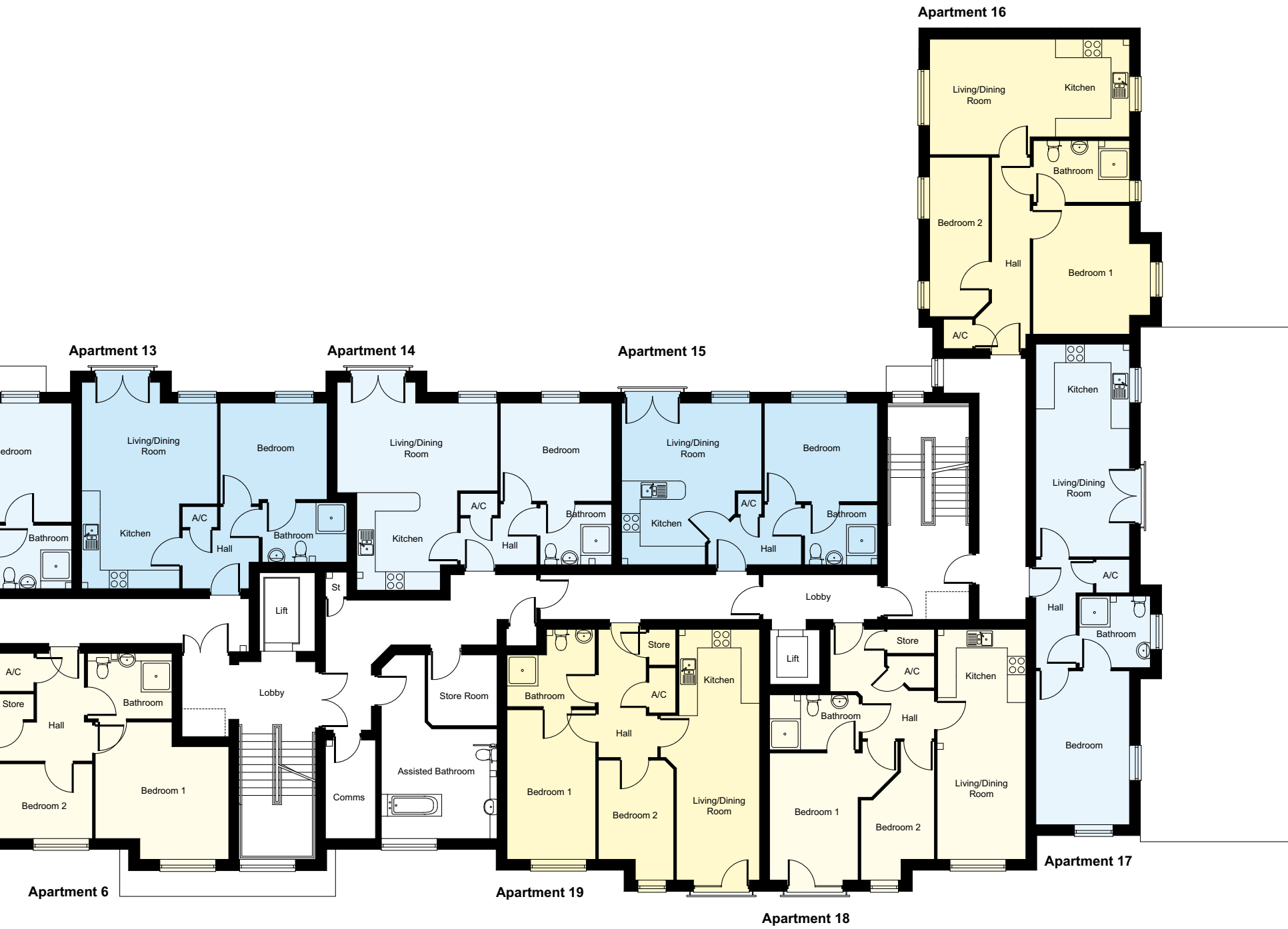


First Floor

Apartments 6 to 19

2 bedroom

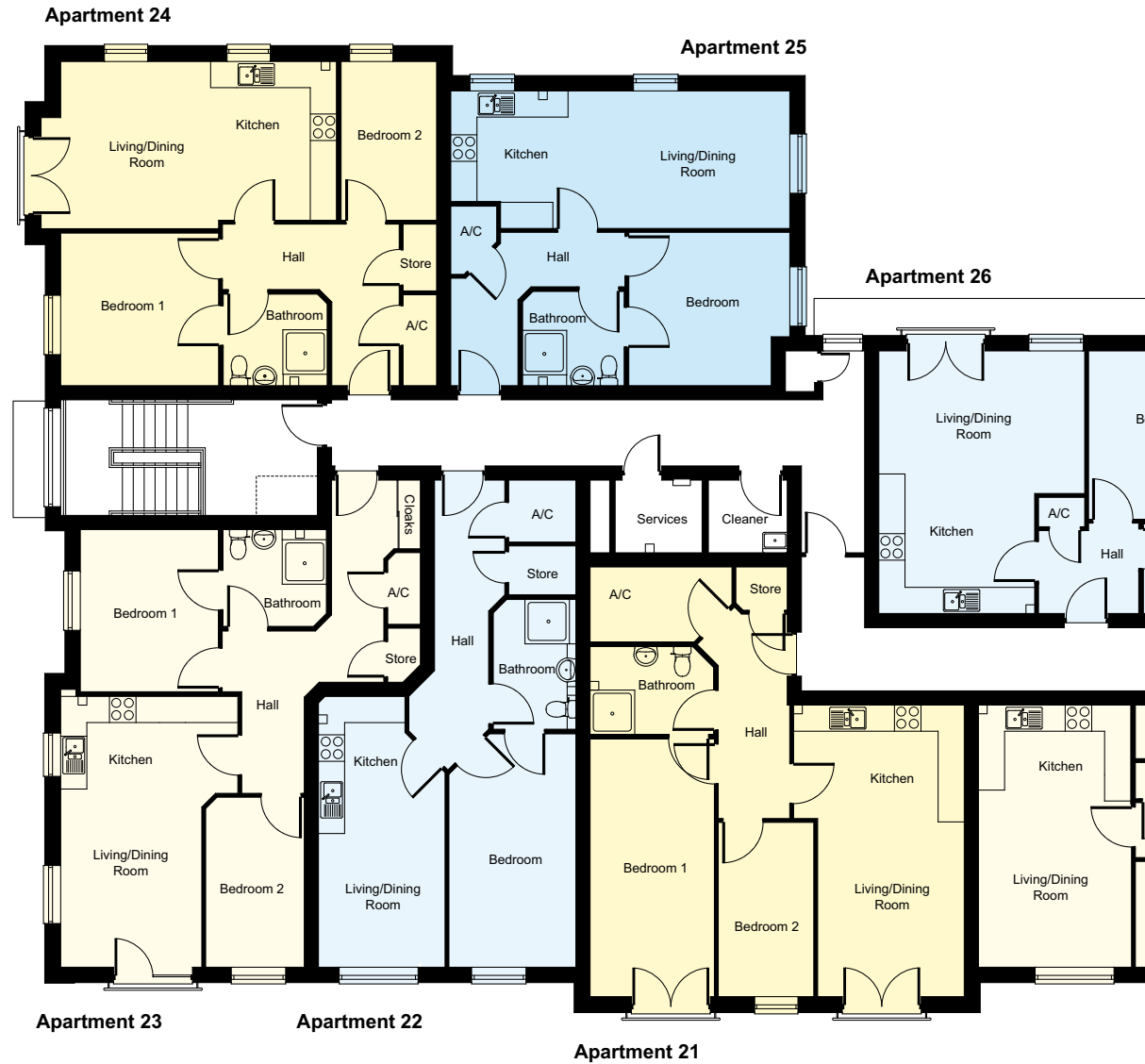




Second Floor

Apartments 20 to 33

1 and 2 bedroom

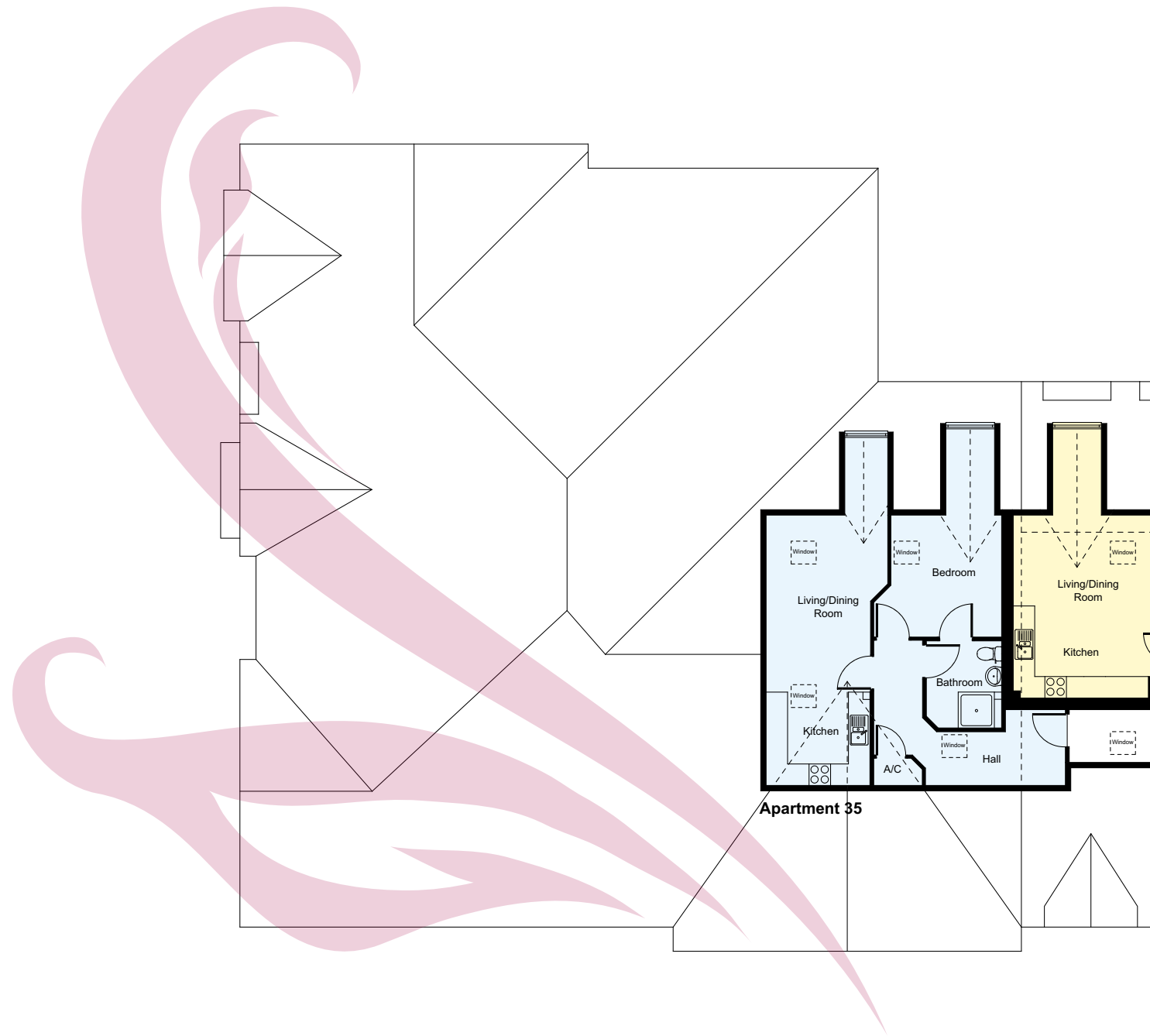


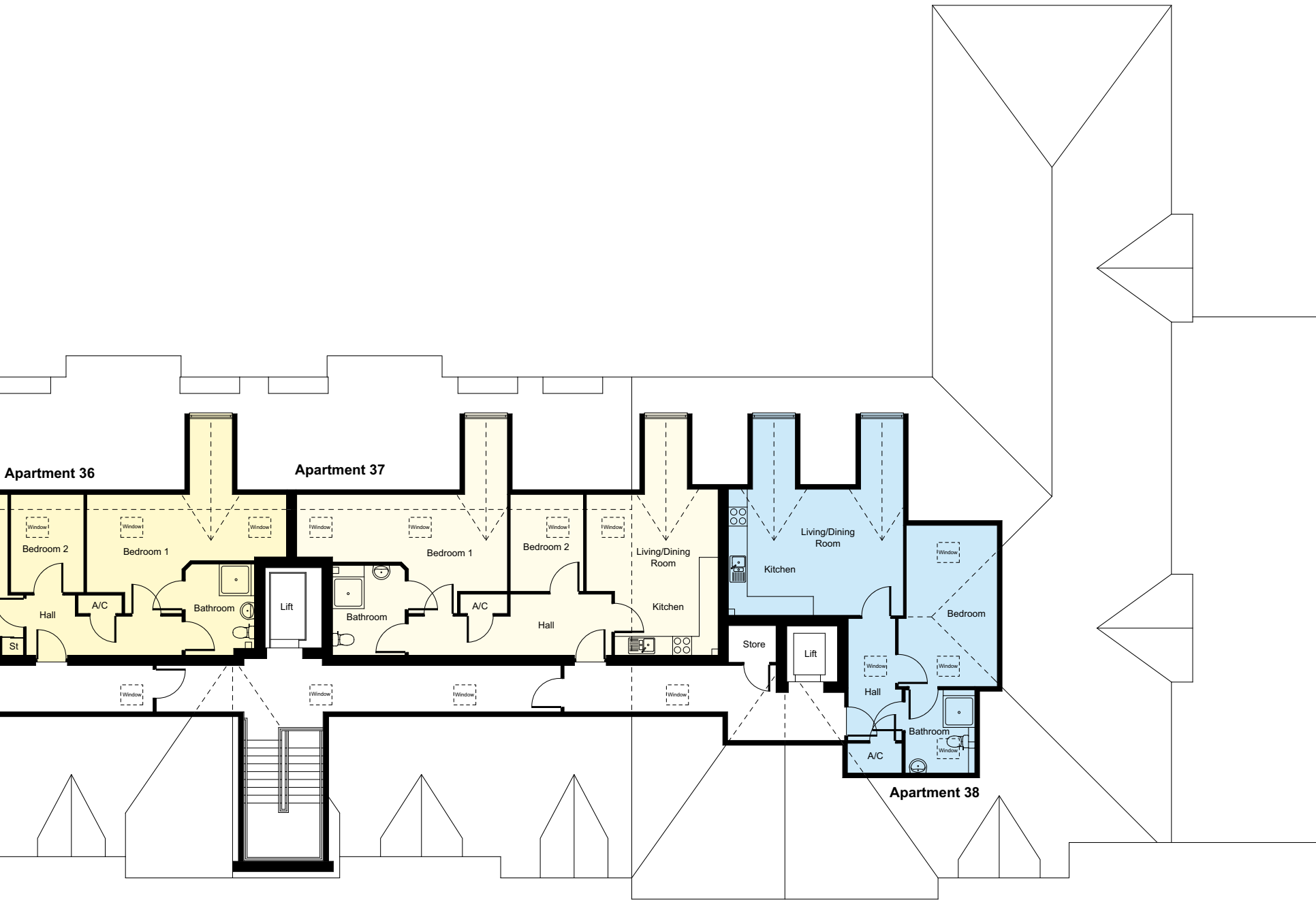


Third Floor

Apartments 35 to 38

1 and 2 bedroom







Dimensions - space to enjoy life

Apartment 1

Living/Dining/Kitchen	5.24m x 3.85m
Bedroom 1	3.16m x 5.62m
Bedroom 2	3.13m x 2.34m
Bathroom	1.99m x 3.04m

Apartment 2, 16 & 30

Living/Dining	3.74m x 4.03m
Kitchen	3.16m x 2.45m
Bedroom 1	4.17m x 3.13m
Bedroom 2	5.17m x 1.92m
Bathroom	2.02m x 3.13m

Apartment 3

Living/Dining/Kitchen	3.00m x 7.67m
Bedroom 1	3.18m x 5.42m
Bedroom 2	2.34m x 3.00m
Bathroom	2.44m x 2.15m

Apartment 4, 18 & 32

Living/Dining/Kitchen	7.47m x 2.88m
Bedroom 1	4.12m x 2.87m
Bedroom 2	3.82m x 2.37m
Bathroom	1.78m x 2.90m

Apartment 5, 19 & 33

Living/Dining/Kitchen	8.15m x 2.69m
Bedroom 1	4.85m x 2.87m
Bedroom 2	3.59m x 2.43m
Bathroom	2.52m x 2.87m

Apartment 10 & 24

Living/Dining/Kitchen	3.64m x 6.34m
Bedroom 1	3.50m x 3.62m
Bedroom 2	3.64m x 2.19m
Bathroom	2.11m x 2.40m

Apartment 11 & 25

Living/Dining/Kitchen	3.14m x 7.78m
Bedroom 1	3.51m x 3.26m
Bathroom	1.95m x 2.35m

Apartment 12 & 26

Living/Dining	3.27m x 4.72m
Kitchen	2.99m x 3.57m
Bedroom 1	3.86m x 3.62m
Bathroom	2.07m x 2.38m

Apartment 13 & 27

Living/Dining	3.75m x 4.40m
Kitchen	2.94m x 3.17m
Bedroom 1	3.12m x 3.47m
Bathroom	1.94m x 2.76m

Apartment 14 & 28

Living/Dining	3.81m x 5.20m
Kitchen	2.70m x 2.93m
Bedroom 1	3.18m x 3.61m
Bathroom	1.97m x 2.34m

Apartment 15 & 29

Living/Dining/Kitchen	5.25m x 4.54m
Bedroom 1	3.19m x 3.67m
Bathroom	1.96m x 2.38m

Apartment 17 & 31

Living/Dining/Kitchen	6.90m x 3.05m
Bedroom 1	4.99m x 3.05m
Bathroom	2.30m x 2.32m

Apartment 6 & 20

Living/Dining/Kitchen	6.02m x 3.51m
Bedroom 1	4.45m x 4.33m
Bedroom 2	2.42m x 3.21m
Bathroom	2.14m x 2.76m

Apartment 7 & 21

Living/Dining	3.87m x 3.36m
Kitchen	2.81m x 3.91m
Bedroom 1	5.91m x 2.85m
Bedroom 2	4.00m x 2.18m
Bathroom	2.03m x 2.85m

Apartment 8 & 22

Living/Dining/Kitchen	6.21m x 2.90m
Bedroom 1	5.35m x 2.91m
Bathroom	3.00m x 1.58m

Apartment 9 & 23

Living/Dining/Kitchen	6.21m x 3.23m
Bedroom 1	3.72m x 3.16m
Bedroom 2	3.90m x 2.26m
Bathroom	1.92m x 2.37m

Apartment 35

Living/Dining	5.32m x 3.38m
Kitchen	2.39m x 2.90m
Bedroom 1	3.38m x 3.53m
Bathroom	2.45m x 2.12m

Apartment 36

Living/Dining/Kitchen	5.10m x 4.07m
Bedroom 1	6.34m x 3.77m
Bedroom 2	3.10m x 2.32m
Bathroom	2.87m x 2.17m

Apartment 37

Living/Dining/Kitchen	5.27m x 4.18m
Bedroom 1	6.68m x 3.06m
Bedroom 2	3.06m x 2.34m
Bathroom	2.85m x 2.30m

Apartment 38

Living/Dining/Kitchen	3.99m x 5.56m
Bedroom 1	5.12m x 2.90m
Bathroom	2.63m x 2.20m



Room sizes may vary. These dimensions should not be used as a basis for furnishings, furniture or appliance spaces etc. Dimensions for such purposes must be verified against actual site measurements.

Individual features such as windows and internal layout may vary.

Facilities and Services

Whiston Court facilities:

- Door entry system
- Warden call system
- Assisted bathroom
- Attractive communal lounge, dining room and activity rooms
- Commercial-grade kitchen
- Two lifts
- Buggy store and charging area
- Health & Beauty room (treatments at additional charge)
- Car park (at additional charge)
- Guest room (additional charge applies)



Affordable Living Package

More included means less for you to worry about.

Living at Whiston Court is more affordable than you may imagine.

A monthly service charge will cover:

- Maintenance and utilities to the shared community areas
- Utilities in your apartment
- 24-hour on-site support
- Morning coffee and a homecooked daily lunch
- Weekly domestic help
- Call alarms
- WiFi in communal areas
- Window cleaning

The only other additional costs are for telephone or internet and council tax.





The ideal location

Whiston Court is conveniently located on White Ladies Close, off the Tything just north of historic Worcester City Centre.

Everything you need within easy reach

The nearest shops, pubs and restaurants are within walking distance and Worcester city centre is just a short bus ride away. Here you'll find plenty to see and do with a busy high street, the popular CrownGate Shopping Centre, a huge choice of shops and eateries, a thriving arts and cultural scene and a delightful park and riverside.

Distances to local facilities:

Bus stop	400 yards
Local shop	200 yards
Post Office	1 mile
GP surgery	400 yards
Leisure centre	600 yards
Town/shop centre	1 mile



Whiston Court

Worcester

See how Whiston Court provides the perfect balance between independence, companionship and affordability.

Where to find your new home

Whiston Court, White Ladies Close, Worcester, WR1 1QA

To find out about current apartment availability and to arrange a viewing

Contact our General Manager on 01905 317850 or 07309 676154

Want to find out more?

Take a tour online at www.abbeyfieldwandh.co.uk

The Abbeyfield Worcester & Hereford Society Ltd.
Part of the Abbeyfield family.

Registered Company number: 961985.

Registered Charity number: 259776. HCA number: H2907

